

## Rockwell CompactLogix/FlexLogix

Supported Series: Rockwell ControlLogix, CompactLogix, FlexLogix CH0 DF1.

Website: <http://www.ab.com>

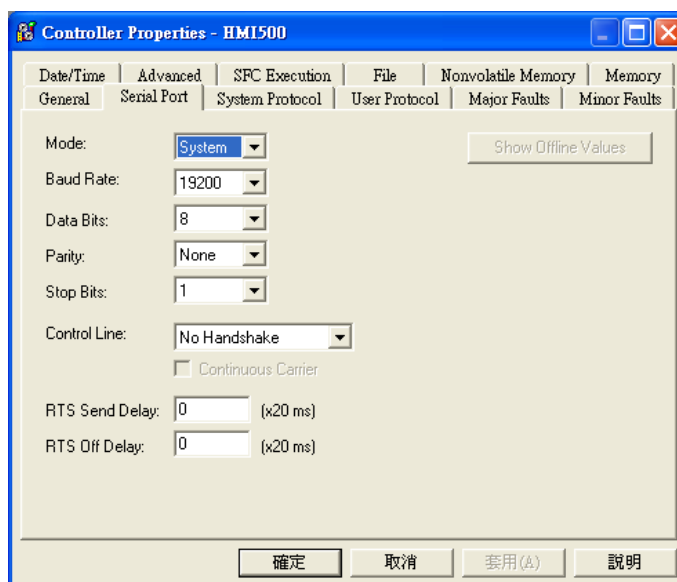
### HMI Setting:

Parameters	Recommended	Options	Notes
PLC type	Rockwell CompactLogix/FlexLogix		
PLC I/F	RS232		
Baud rate	19200	9600, 19200, 38400	
Data bits	8	8	
Parity	None	Even, Odd, None	
Stop bits	1	1	
HMI sta. no.	0		
PLC sta. no.	1	1-31	

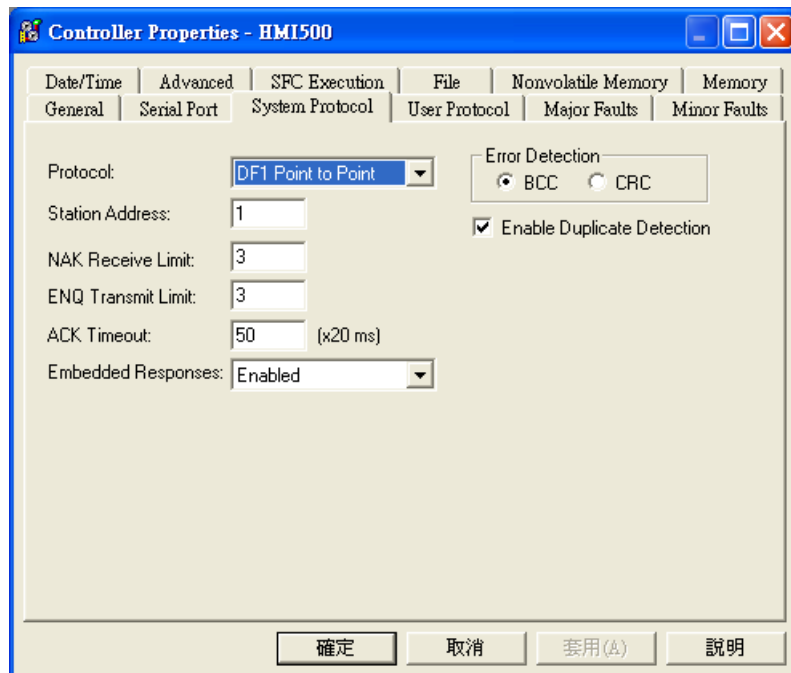
### PLC Setting:

#### Communication mode

DF1 No Handshake protocol 19200, None, 8, 1 (default)  
Error Check: BCC, Station Address: 1



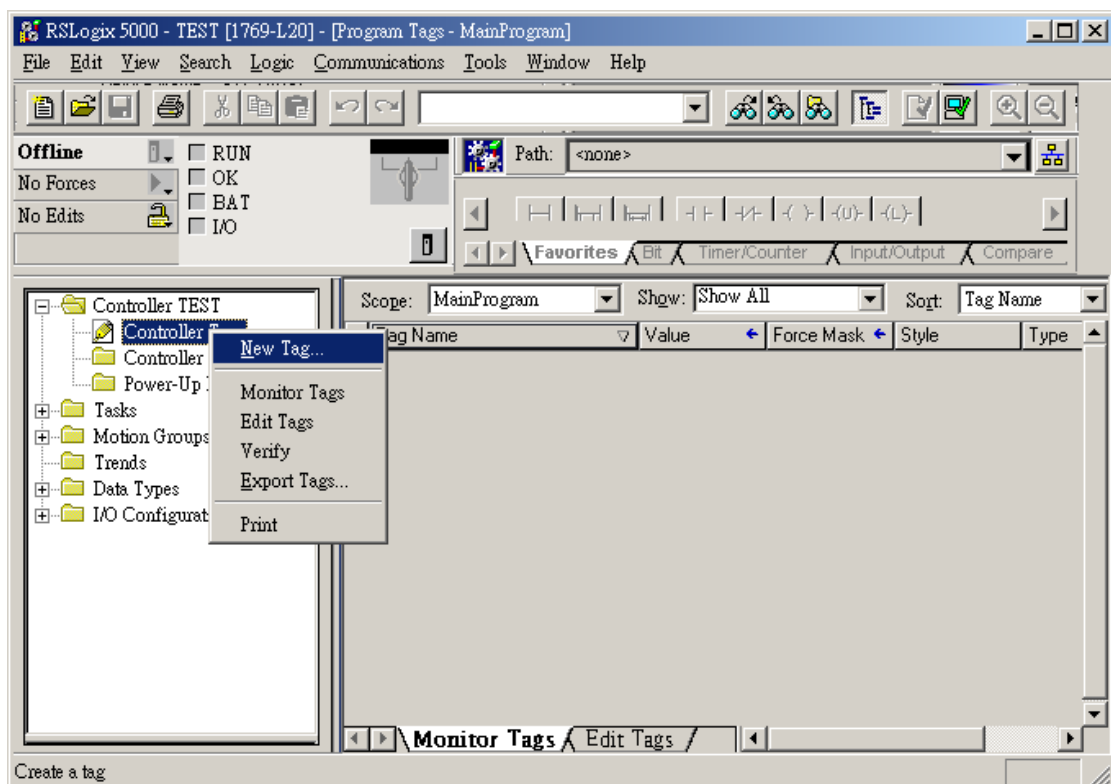
ControlLogix, CompactLogix CPU CH0 setting:

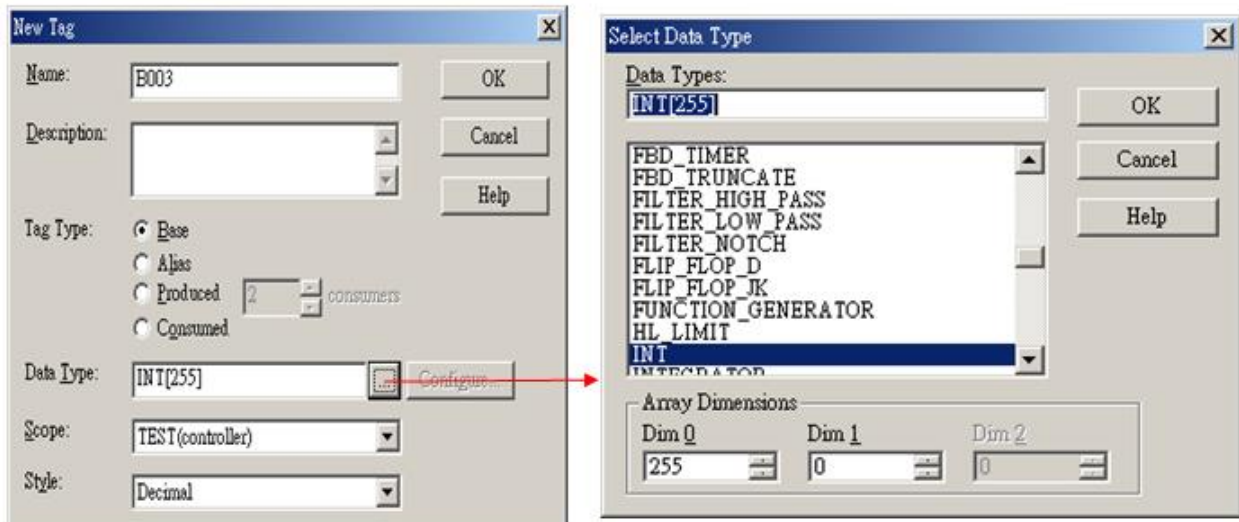


Create a Tag:

The name format must be 4 chars. For example: B003, T004, C005, N007, and F008.

Two or three chars are not available. For example: B03 or B3.





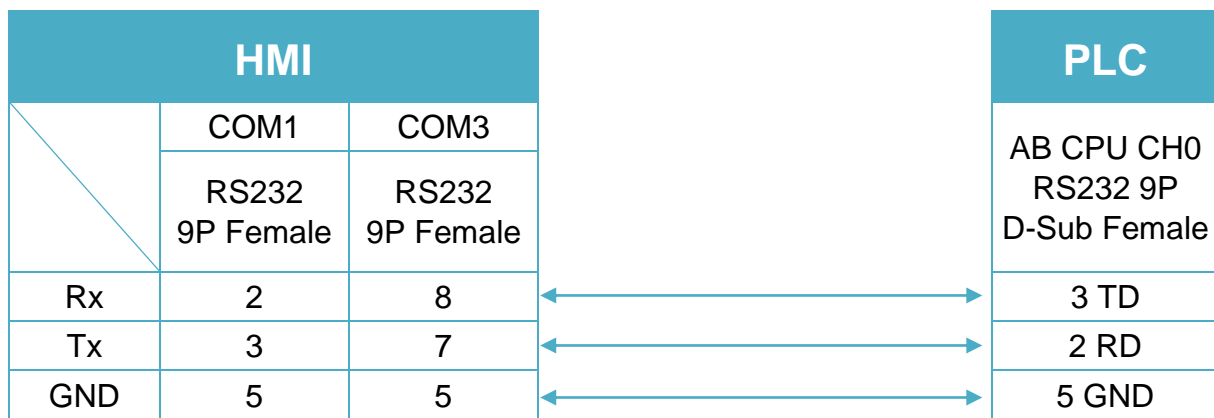
## Device Address:

Bit/Word	Device type	Format	Range	Memo
B	B_BOOL	FFFDDDD	0 ~ 25525515	Bit data file
B	N_BOOL	FFFDDDD	0 ~ 25525515	Integer data file bit level (N7, 10 ~ 255)
DW	Tx.ACC	FFFDDDD	0 ~ 255255	Timer Accumulator Value (T4, T10 ~ 255)
DW	Tx.PRE	FFFDDDD	0 ~ 255255	Timer Preset Value (T4, T10 ~ 255)
DW	Nx_INT	FFFDDDD	0 ~ 255255	Integer data file (N7, 10 ~ 255)
W	Bx_INT	FFFDDDD	0 ~ 255255	Bit data file word level
DW	Cx.ACC	FFFDDDD	0 ~ 255255	Counter Accumulator Value (C5, C10 ~ 255)
DW	Cx.PRE	FFFDDDD	0 ~ 255255	Counter Preset Value (C5, C10 ~ 255)
W	F8_REAL	DDD	0 ~ 255	Floating point data file (F8)
W	Fx_REAL	FFFDDDD	0 ~ 255255	Floating point data file (F008, F010 ~ F255)

## Wiring Diagram:

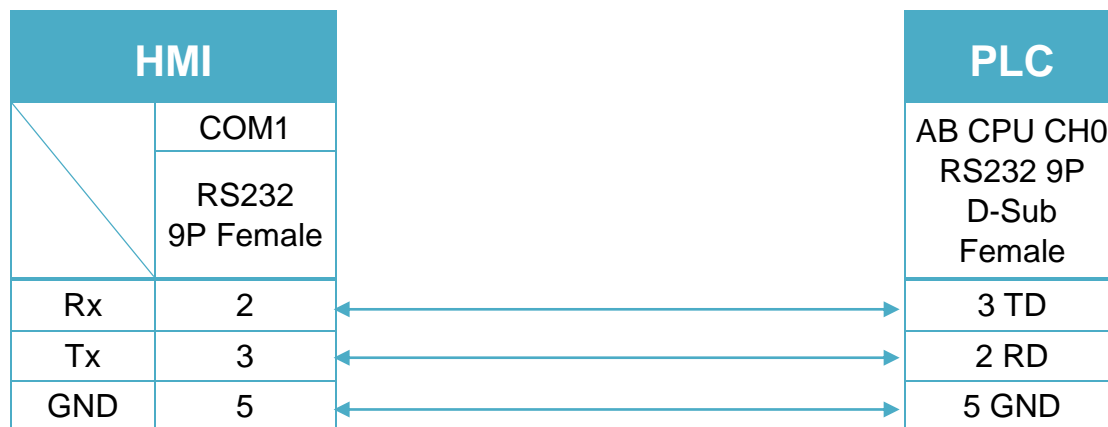
### Diagram 1

<b>cMT Series</b>	<b><i>cMT3071 / cMT3072 / cMT3090 / cMT3103 / cMT3151</i></b>
<b>eMT Series</b>	<b><i>eMT3070/ eMT3105 / eMT3120 / eMT3150</i></b>
<b>MT-iE</b>	<b><i>MT8073iE / MT8102iE</i></b>
<b>MT-XE</b>	<b><i>MT8092XE</i></b>
<b>MT-iP</b>	<b><i>MT6103iP / MT8102iP</i></b>



## Diagram 2

<b>cMT Series</b>	<i>cMT-SVR/ cMT-G01 / cMT-G02 / cMT-HDM / cMT-FHD</i>
<b>mTV</b>	<i>mTV</i>
<b>MT-iE</b>	<i>MT8070iE / MT6070iE / MT8100iE / MT8121iE / MT8150iE / MT8071iE / MT6071iE / MT8072iE / MT6072iE / MT8073iE / MT8101iE / MT8102iE / MT8103iE</i>
<b>MT-XE</b>	<i>MT8121XE / MT8150XE / MT8090XE</i>



## Diagram 3

<b>MT-iE</b>	<i>MT8050iE / MT8053iE</i>
<b>MT-iP</b>	<i>MT6051iP / MT8051iP / MT6071iP / MT8071iP</i>

