

# Rockwell CompactLogix - Free Tag Names

Rockwell ControlLogix, CompactLogix, FlexLogix CH0 DF1.

Website: <http://www.ab.com>

## HMI Setting:

Parameters	Recommended	Options	Notes
PLC type	Rockwell CompactLogix - Free Tag Names		
PLC I/F	RS232		
Baud rate	19200	9600, 19200, 38400	
Data bits	8	8	
Parity	None	Even, Odd, None	
Stop bits	1	1	
Turn around delay	10	10 ~ 100	*Note
HMI sta. no.	0		
PLC sta. no.	1	1-31	

\*Note : When the communication is not stable, please adjust the parameter of [turn around delay] till the communication is normal.

## PLC Setting:

### Communication mode

DF1 No Handshake protocol 19200, None, 8, 1 (default)  
Error Check: BCC, Station Address: 1

Create new tags (Controller Tags and Program Tags supported).

The screenshot displays the RSLogix 5000 software interface. The 'Controller Tags' window is open, showing a list of tags for the 'AB(controller)' scope. The tags include:

Name	Value	Force Mask	Style	Data Type	Description
b003		(...)	(...)	Decimal	INT(1000)
Array2D		(...)	(...)	Decimal	DINT(25,5)
ArrayBool		(...)	(...)	Decimal	BOOL(256)
ArrayDINT		(...)	(...)	Decimal	DINT(130)
ArrayReal		(...)	(...)	Float	REAL(125)
B001		(...)	(...)	Decimal	INT(15)
b1	2#0			Binary	BOOL
B131		(...)	(...)	Decimal	BOOL(256)
B132		(...)	(...)	Decimal	INT(256)
dataA		(...)	(...)		TextTypeA

The 'Program Tags' window is also open, showing tags for the 'MainProgram' scope:

Name	Value	Force Mask	Style	Data Type	Description
alice	0			Decimal	BOOL
dw		(...)	(...)		ALARM
nicolas		(...)	(...)		AB-Embedded_ID16FC.0
Output_Light	1			Decimal	BOOL
PB		(...)	(...)	Decimal	BOOL
ptDint	0			Decimal	DINT
Tony	0.0			Float	REAL

There are two ways to get tags, one is by importing .L5X, another is importing .CSV.

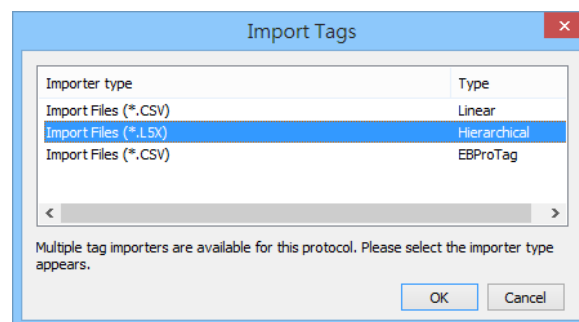
After selecting one of these ways when creating a project, please use the same way for future maintenance to prevent compilation failure.

**Recommended : Import .L5X**

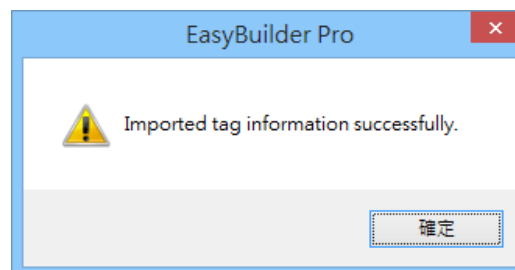
## Import Tag (L5X):

1. Export .L5X file from RSLogix 5000 software. The path is: File -> Save as -> \*.L5X.

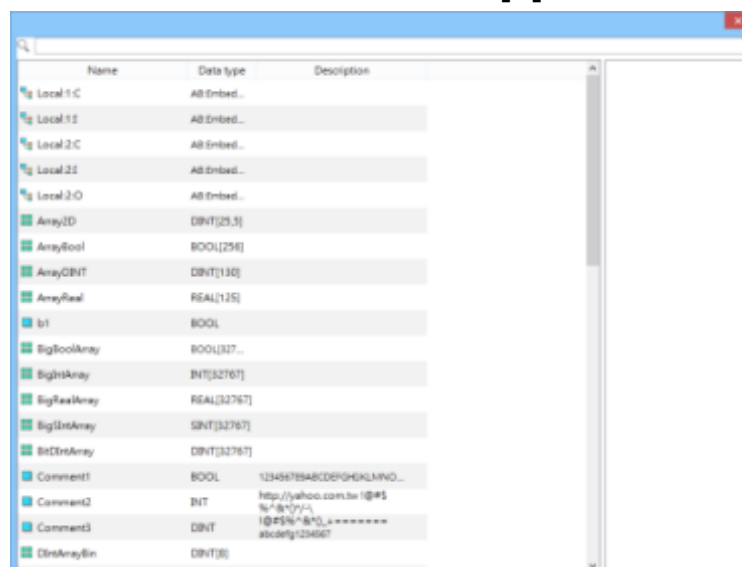
2. Add the driver in EasyBuilder Pro, click **[Import Tags]**, select **[Import Files] (\*.L5X)**, and then click **[OK]**.



3. Click **[OK]** after tag information is imported successfully.

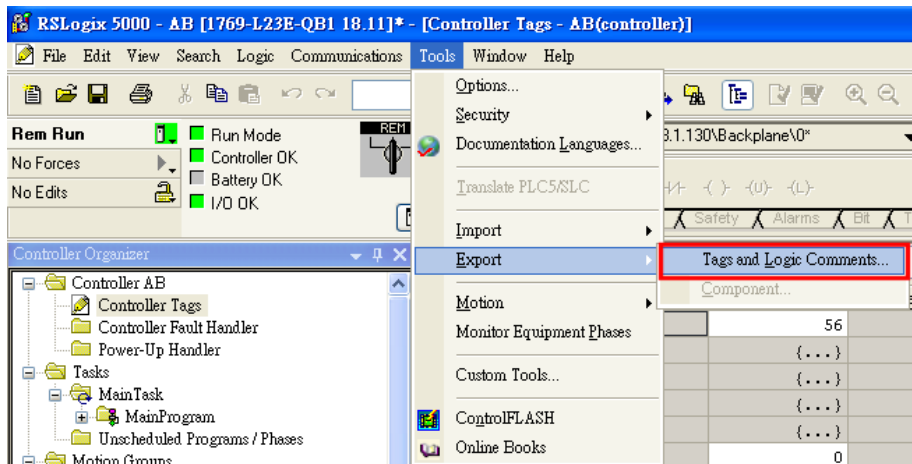


4. View imported information and click the close icon **[X]** to leave.



## Import Tag (CSV):

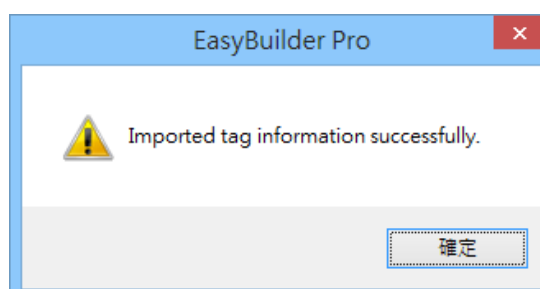
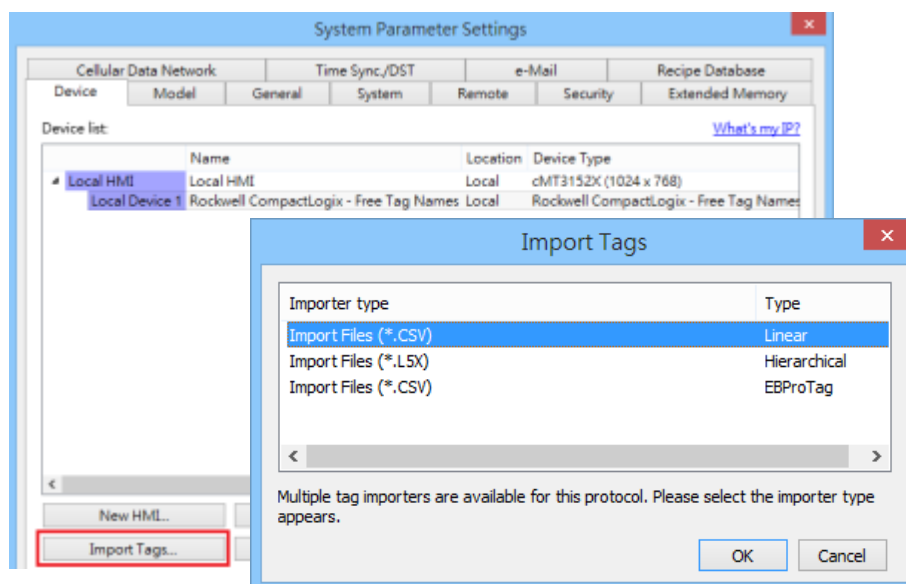
1. Export Tag data to CSV file. ( **[Tools]** » **[Export]** » **[Tags and Logic Comments]** )



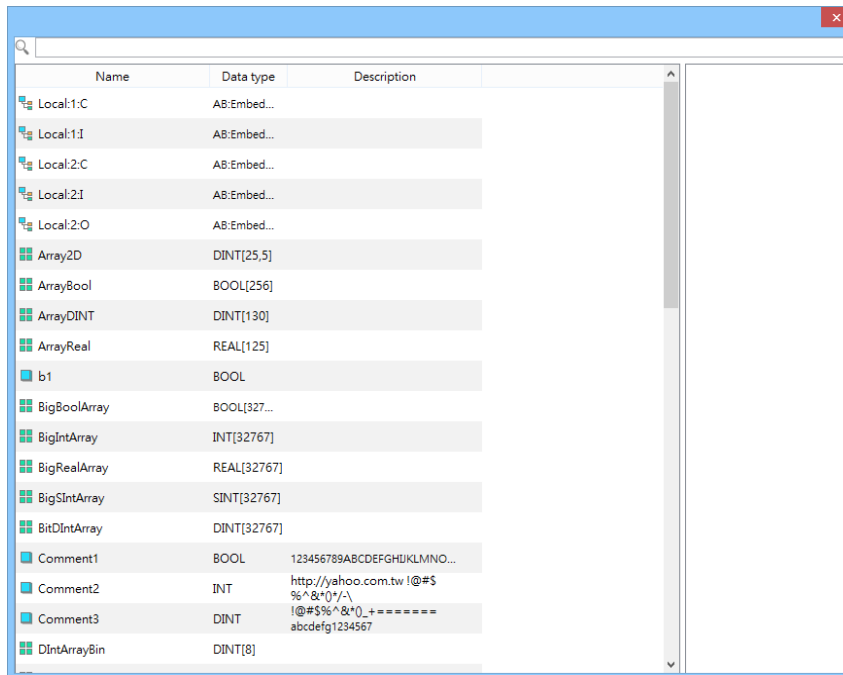
Note: The separator character in CSV file must be a comma “,” otherwise the file is invalid.

The directory of changing system settings: **[Control Panel]** » **[Date, Time, Language, and Regional Options]** » **[Change the format of numbers, dates, and times]** » **[Customize]** » **[List separator]**. Please select “,” and export CSV file after setting.

2. In **[System Parameter Settings]**, click **[Import Tags]**, select **[Import Files (\*.CSV)]** (**\*.CSV**), and click **[OK]**.



3. View imported information and click the close icon [X] to leave.



## Device Address:

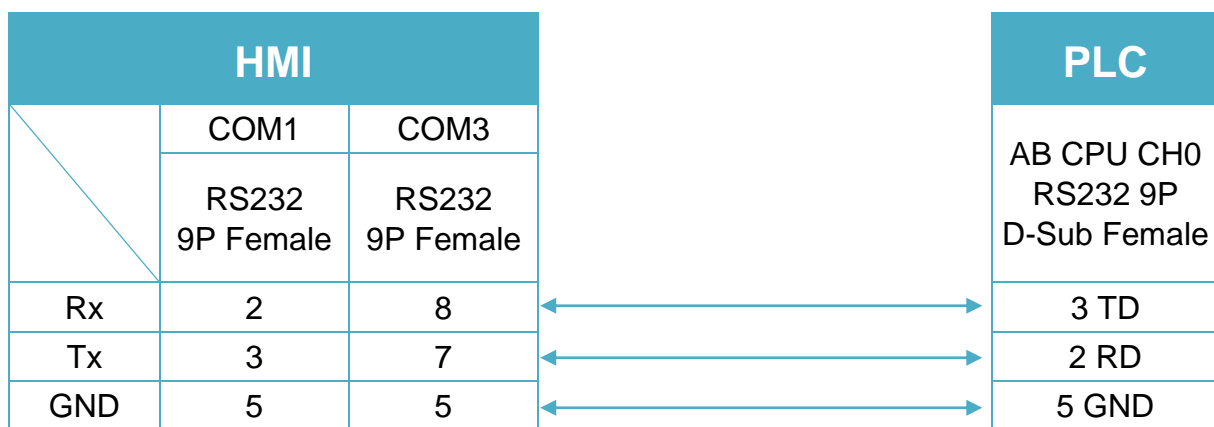
PLC Data Type	Bit/Word	EasyBuilder Data Format	Memo
BOOL	Boolean	Bit object	
BitArray			
SINT			
INT	Integer	16-bit signed, ASCII	-32768 ~ 32767
DINT	Double Integer	32-bit signed	$-2^{31} \sim (2^{31}-1)$
REAL	Single Precision Float	32-bit Float	IEEE 754
LINT	Long Integer	64-bit	

**Note:** EBPro V6.03.02 or later supports 64 bits data type (**cMT Series only**), but please note that the address limit range is 48 bits in maximum.

## Wiring Diagram:

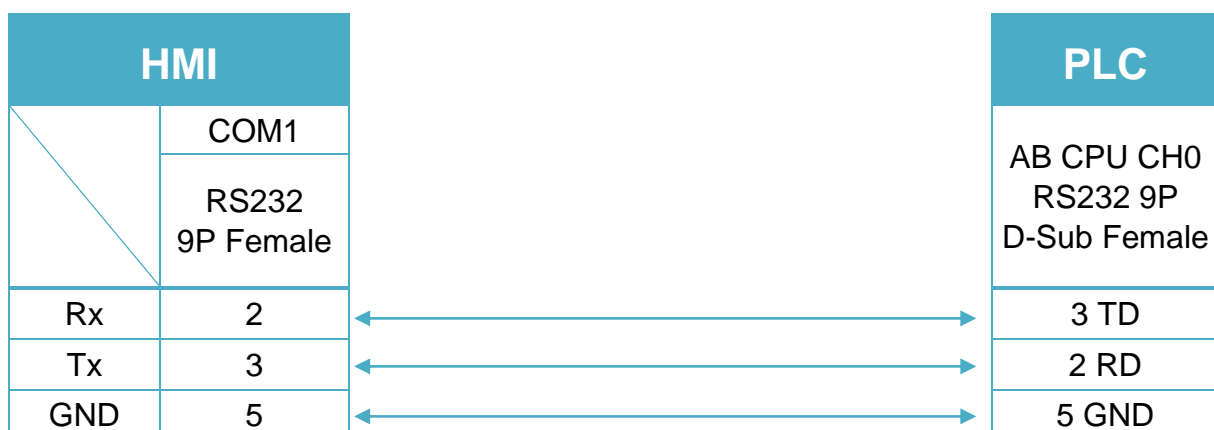
### Diagram 1

<b>cMT Series</b>	<i>cMT3071 / cMT3072 / cMT3090 / cMT3103 / cMT3151</i>
<b>eMT Series</b>	<i>eMT3070/ eMT3105 / eMT3120 / eMT3150</i>
<b>MT-iE</b>	<i>MT8073iE / MT8102iE</i>
<b>MT-XE</b>	<i>MT8092XE</i>
<b>MT-iP</b>	<i>MT6103iP/ MT8102iP</i>



### Diagram 2

<b>cMT Series</b>	<i>cMT-SVR/ cMT-G01 / cMT-G02 / cMT-HDM / cMT-FHD</i>
<b>mTV</b>	<i>mTV</i>
<b>MT-iE</b>	<i>MT8070iE / MT6070iE / MT8100iE / MT8121iE / MT8150iE / MT8071iE / MT6071iE / MT8072iE / MT6072iE / MT8073iE / MT8101iE / MT8102iE / MT8103iE</i>
<b>MT-XE</b>	<i>MT8121XE / MT8150XE / MT8090XE</i>



### Diagram 3

**MT-iE** *MT8050iE/ MT8053iE*

**MT-iP** *MT6051iP/ MT8051iP / MT6071iP / MT8071iP*

