

Rockwell EtherNet/IP (CompactLogix) – Free Tag Names

Supported Series: Rockwell CompactLogix, FelxLogix Ethernet

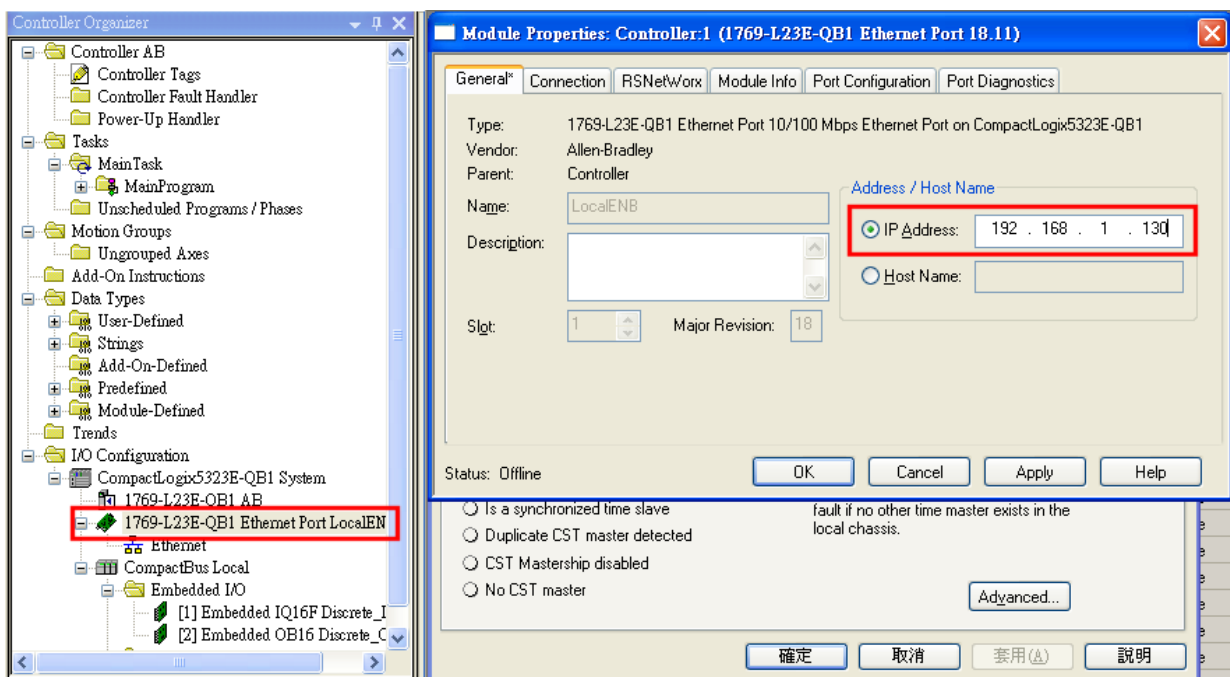
Website: <http://www.ab.com>

HMI Settings:

Parameters	Recommended	Options	Notes
PLC type	Rockwell EtherNet/IP (CompactLogix) – Free Tag Names		
PLC I/F	Ethernet		
Port no.	44818		
PLC sta. no.	1		

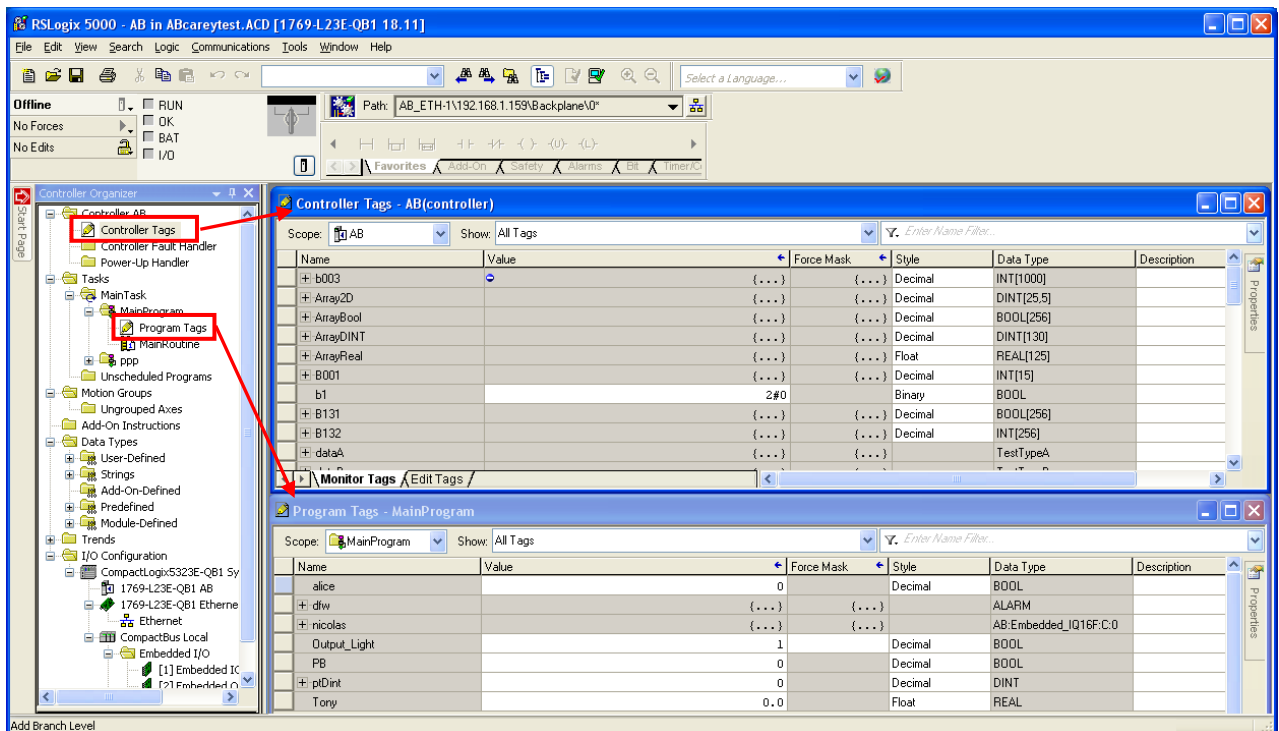
PLC Settings:

1. Set PLC IP address.



The screenshot shows the Rockwell Studio 5000 interface. On the left, the Controller Organizer displays the project structure for Controller AB. The '1769-L23E-QB1 Ethernet Port LocalEN' module is highlighted with a red box. On the right, the 'Module Properties' dialog box is open for 'Controller:1 (1769-L23E-QB1 Ethernet Port 18.11)'. The 'General' tab is active, and the 'Address / Host Name' section is expanded. The 'IP Address' radio button is selected, and the IP address '192.168.1.130' is entered in the text field, which is also highlighted with a red box. Other fields include 'Name: LocalENB', 'Description:', 'Slot: 1', and 'Major Revision: 18'. The status is 'Offline'. At the bottom, there are buttons for 'OK', 'Cancel', 'Apply', and 'Help', along with a 'Advanced...' button. The bottom of the dialog also contains Japanese characters: '確定', '取消', '套用(A)', and '説明'.

2. Create new tags (Controller Tags and Program Tags supported).



There are two ways to get tags, one is by importing .L5X or .CSV files (click Import Tags...), another is by connecting PLC (click Get Tag Info...). After selecting one of these ways when creating a project, please use the same way for future maintenance to prevent compilation failure.

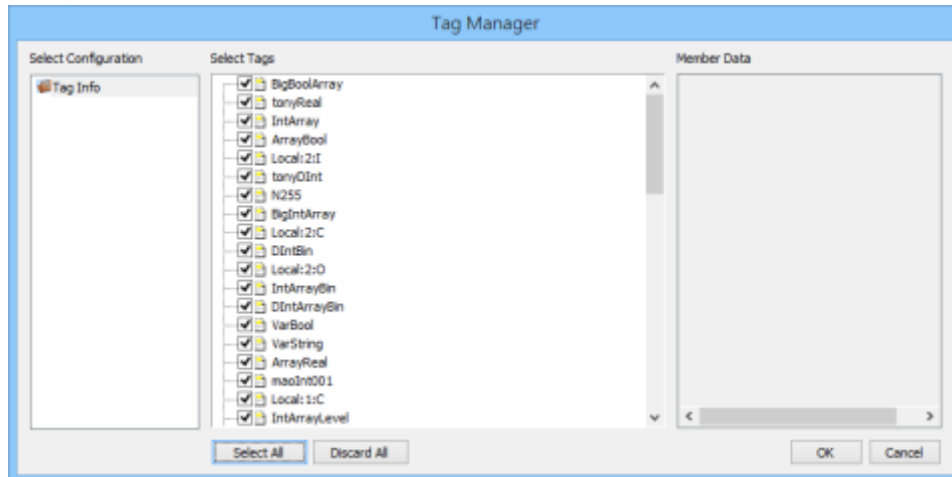
Recommended for PLC Offline: Import .L5X

Recommended for PLC Online: Get Tag Info

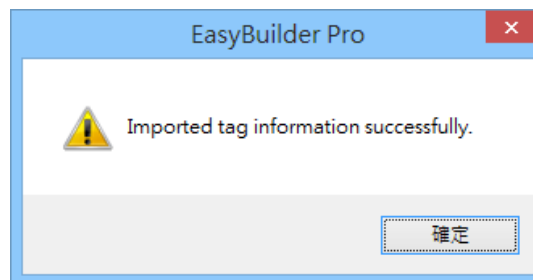


Get Tag Info:

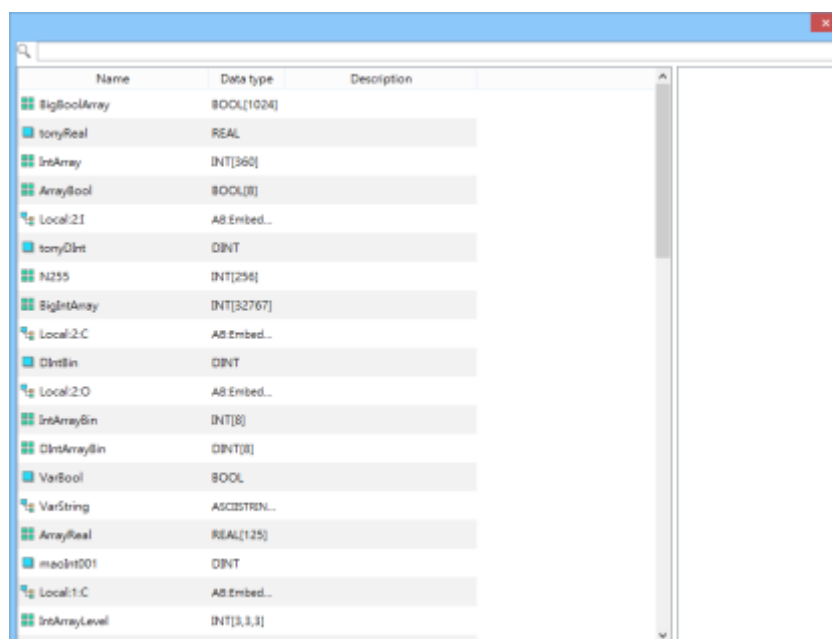
1. After adding the driver in EasyBuilder Pro, check whether all communication parameters are correct, and then click **[Get Tag Info]**.
2. Select the tag information to be imported and then click **[OK]**.



3. Click **[OK]** after tag information is imported successfully.

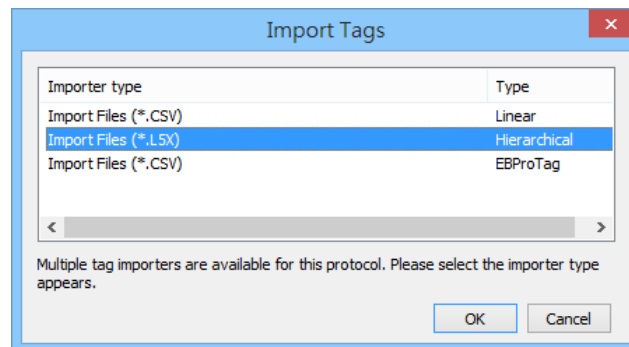


4. View imported information and click the close icon **[X]** to leave.

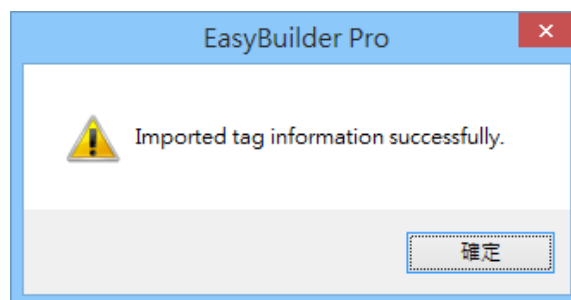


Import Tag (L5X):

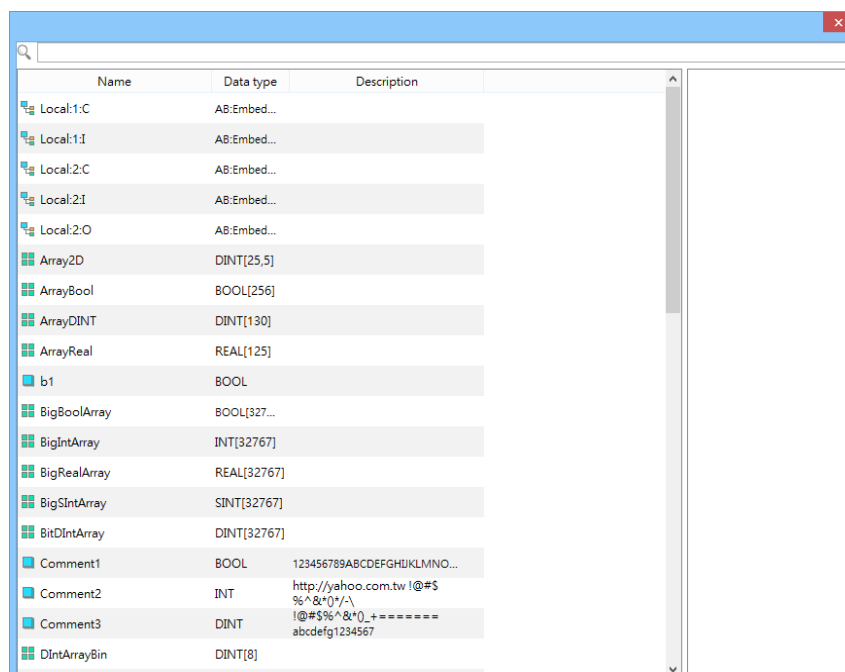
1. Export .L5X file from RSLogix 5000 software. The path is: File -> Save as -> *.L5X.
2. Add the driver in EasyBuilder Pro, click **[Import Tags]**, select **[Import Files] (*.L5X)**, and then click **[OK]**.



3. Click **[OK]** after tag information is imported successfully.

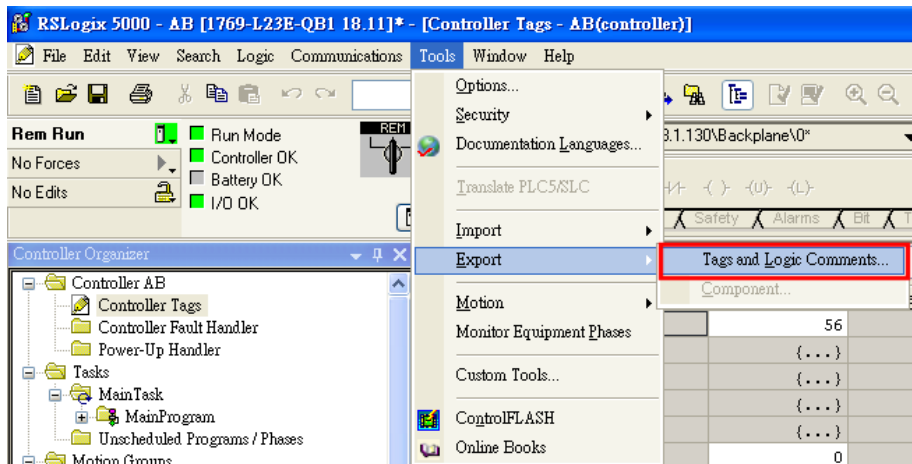


4. View imported information and click the close icon **[X]** to leave.



Import Tag (CSV):

1. Export Tag data to CSV file. (**[Tools]** » **[Export]** » **[Tags and Logic Comments]**)



Note: The separator character in CSV file must be a comma “,” otherwise the file is invalid.

The directory of changing system settings: **[Control Panel]** » **[Date, Time, Language, and Regional Options]** » **[Change the format of numbers, dates, and times]** » **[Customize]** » **[List separator]**. Please select “,” and export CSV file after setting.

2. In **[System Parameter Settings]**, click **[Import Tags]**, select **[Import Files]** (***.CSV**), and click **[OK]**.

