

Rockwell EtherNet/IP (ControlLogix) – Free Tag Names

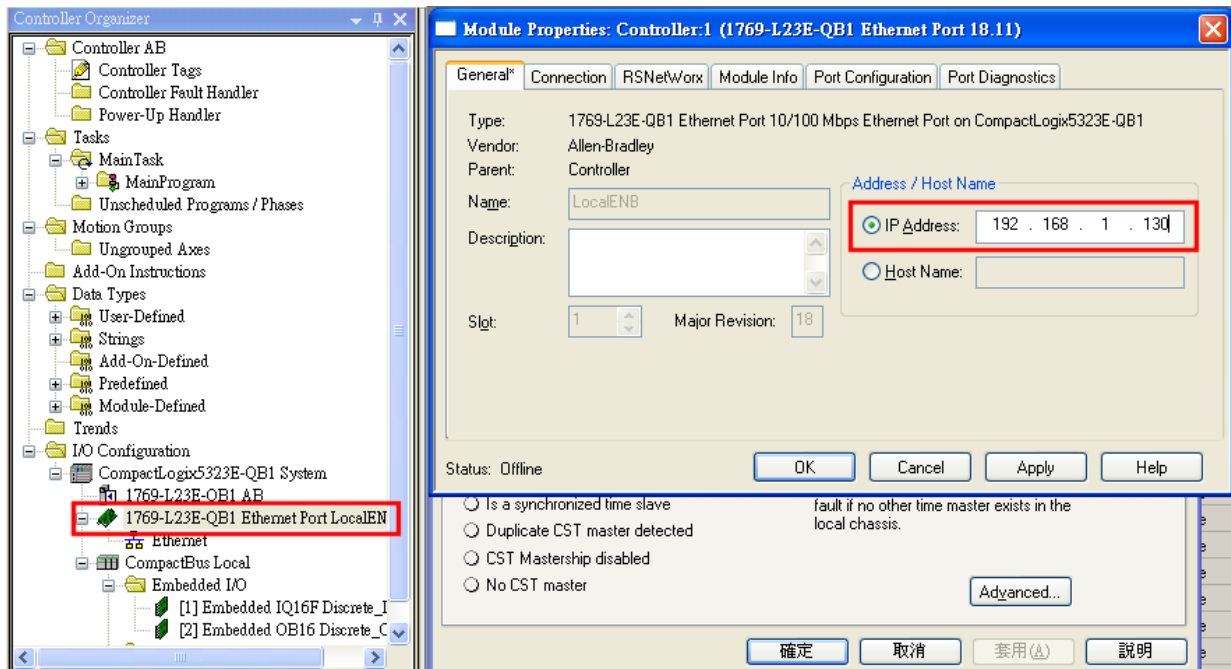
Supported Series: Rockwell ControlLogix, CompactLogix, FlexLogix Ethernet,
CompactLogix 1768-L43 1768-L45 with 1768-ENBT/A Ethernet module
Website: <http://www.ab.com>

HMI Settings:

Parameters	Recommended	Options	Notes
PLC type	Rockwell EtherNet/IP (ControlLogix) – Free Tag Names		
PLC I/F	Ethernet		
Port no.	44818		
PLC sta. no.	The same as CPU Slot No.		

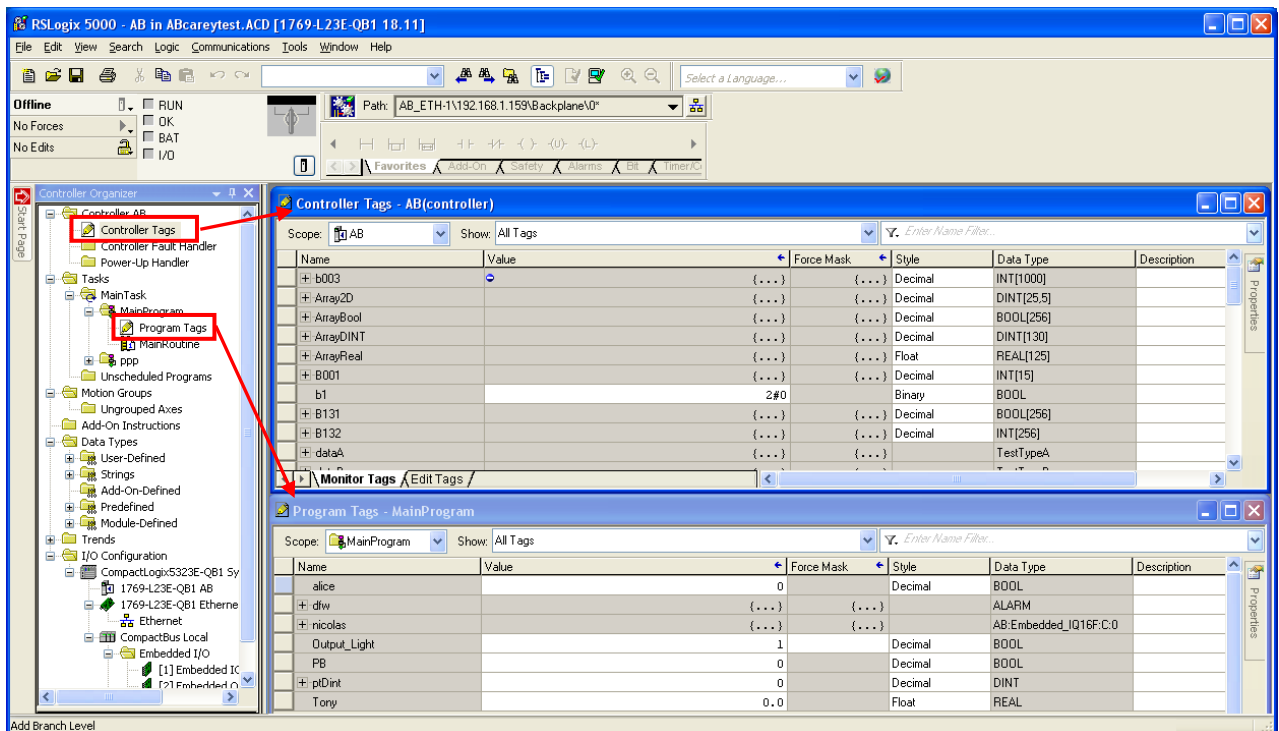
PLC Settings:

1. Set PLC IP address.



The screenshot shows the Rockwell Studio 5000 interface. On the left is the Controller Organizer tree, where the '1769-L23E-QB1 Ethernet Port LocalEN' module is selected and highlighted with a red box. On the right is the 'Module Properties: Controller:1 (1769-L23E-QB1 Ethernet Port 18.11)' dialog box. The 'General' tab is active, showing the module's name as 'LocalENB' and its slot as '1'. The 'Address / Host Name' section has the 'IP Address' radio button selected, with the IP address '192.168.1.130' entered in the text field and highlighted by a red box. The 'Host Name' radio button is unselected. At the bottom of the dialog, there are buttons for 'OK', 'Cancel', 'Apply', and 'Help', along with Japanese equivalents '確定', '取消', '套用(A)', and '説明'.

2. Create new tags (Controller Tags and Program Tags supported).



There are two ways to get tags, one is by importing .L5X or .CSV files (click Import Tags...), another is by connecting PLC (click Get Tag Info...). After selecting one of these ways when creating a project, please use the same way for future maintenance to prevent compilation failure.

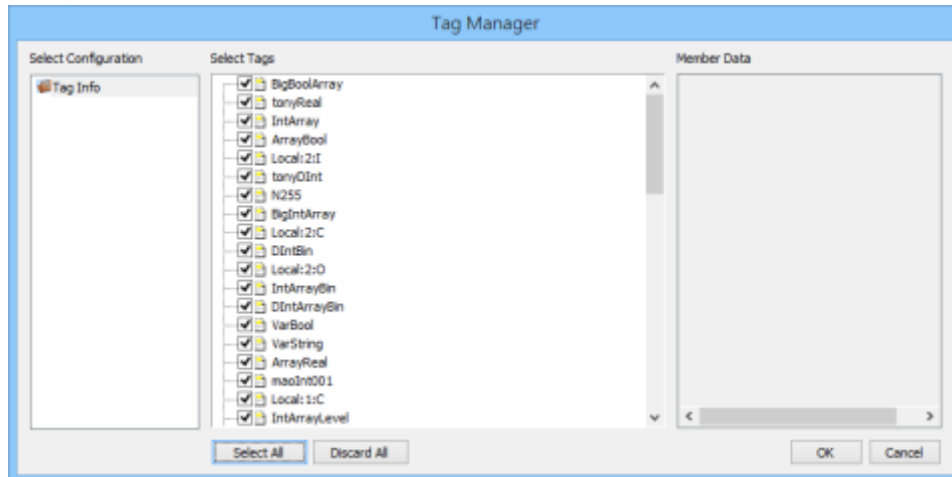
Recommended for PLC Offline: Import .L5X

Recommended for PLC Online: Get Tag Info

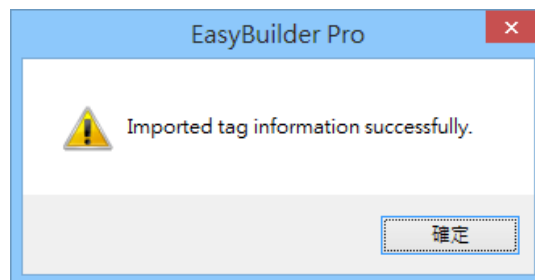


Get Tag Info:

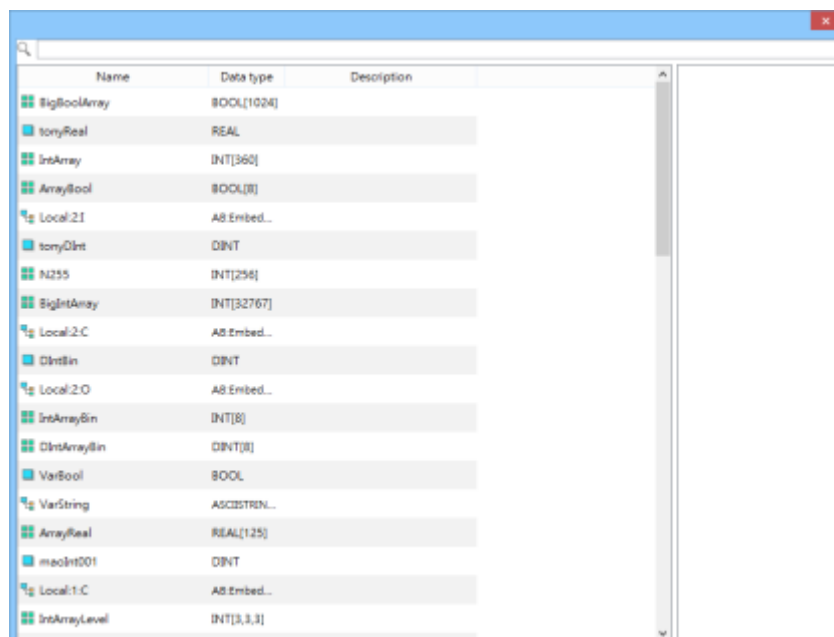
1. After adding the driver in EasyBuilder Pro, check whether all communication parameters are correct, and then click **[Get Tag Info]**.
2. Select the tag information to be imported and then click **[OK]**.



3. Click **[OK]** after tag information is imported successfully.

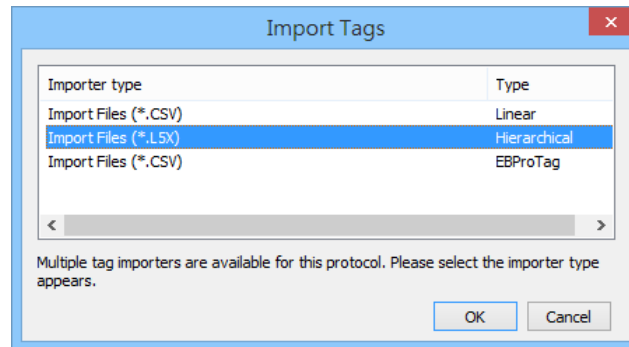


4. View imported information and click the close icon **[X]** to leave.

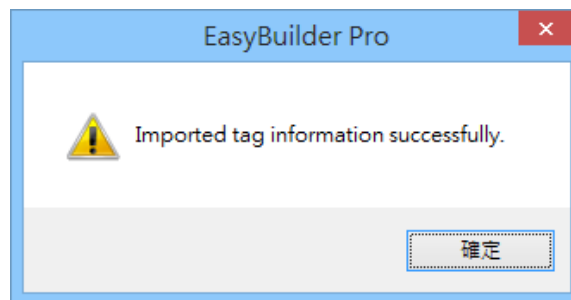


Import Tag (L5X):

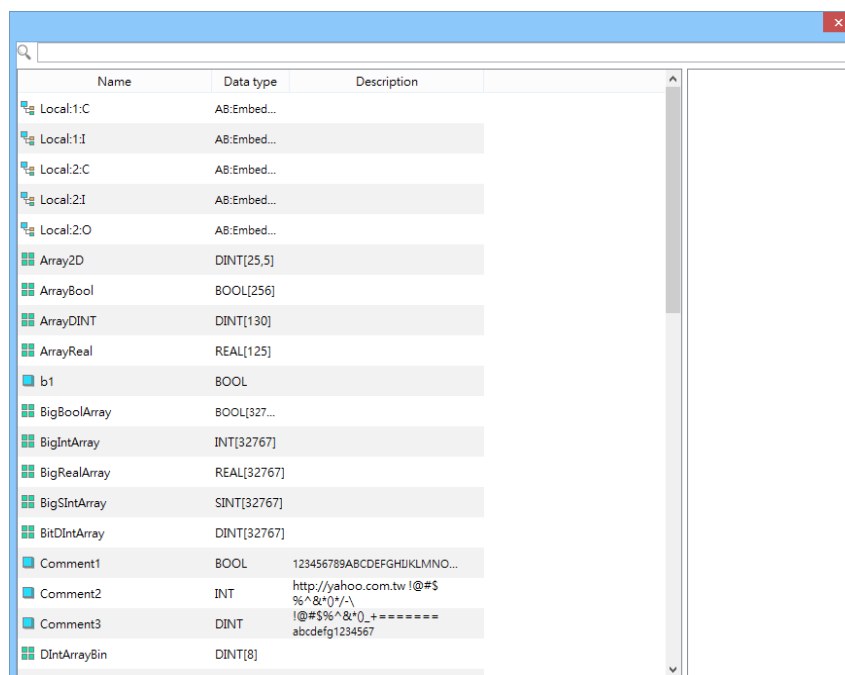
1. Export .L5X file from RSLogix 5000 software. The path is: File -> Save as -> *.L5X.
2. Add the driver in EasyBuilder Pro, click **[Import Tags]**, select **[Import Files] (*.L5X)**, and then click **[OK]**.



3. Click **[OK]** after tag information is imported successfully.

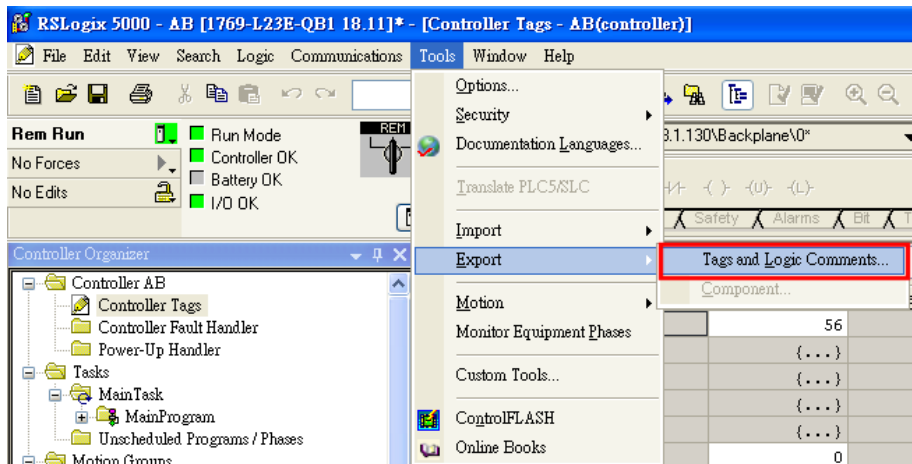


4. View imported information and click the close icon **[X]** to leave.



Import Tag (CSV):

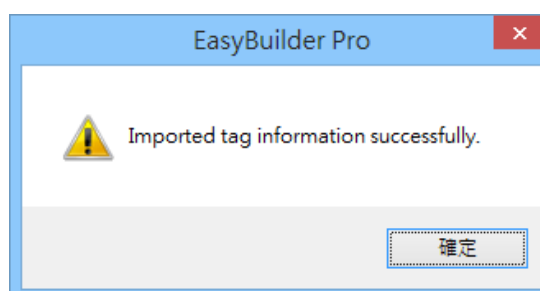
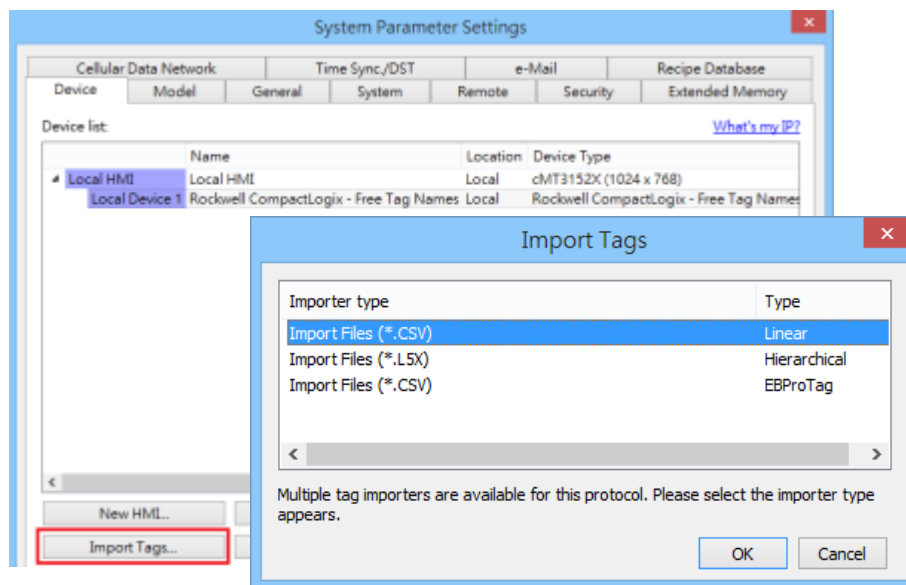
1. Export Tag data to CSV file. (**[Tools]** » **[Export]** » **[Tags and Logic Comments]**)



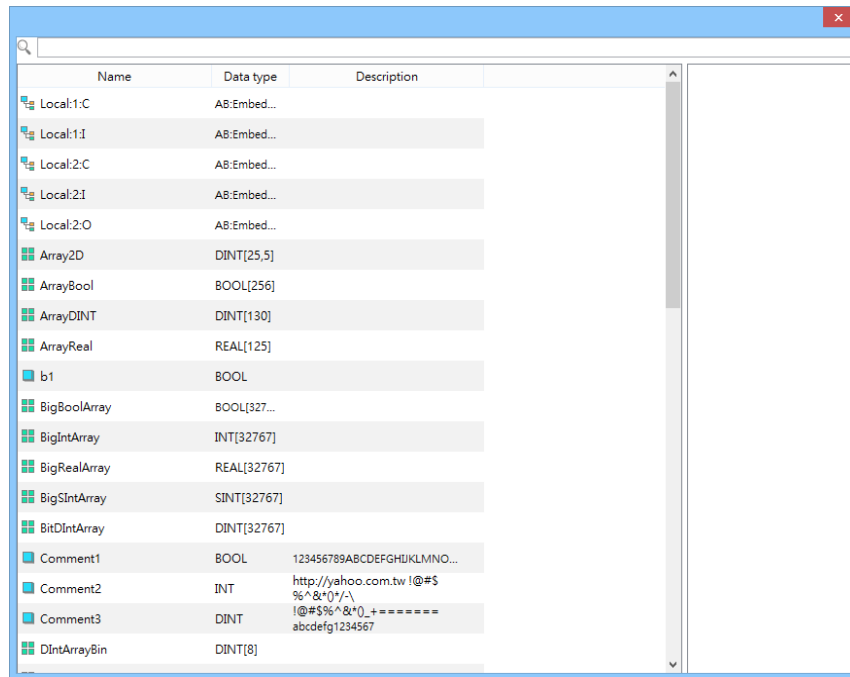
Note: The separator character in CSV file must be a comma “,” otherwise the file is invalid.

The directory of changing system settings: **[Control Panel]** » **[Date, Time, Language, and Regional Options]** » **[Change the format of numbers, dates, and times]** » **[Customize]** » **[List separator]**. Please select “,” and export CSV file after setting.

2. In **[System Parameter Settings]**, click **[Import Tags]**, select **[Import Files (*.CSV)]** **[Import Files (*.CSV)]**, and click **[OK]**.



3. View imported information and click the close icon **[X]** to leave.



Device Address:

PLC data type name	Bit/Word	EasyBuilder data format	Memo
BOOL	Boolean	Bit object	
BitArray			
SINT			
INT	Integer	16-bit signed, ASCII	-32768 ~ 32767
DINT	Double Integer	32-bit signed	$-2^{31} \sim (2^{31}-1)$
REAL	Single Precision Float	32-bit Float	IEEE 754

Wiring Diagram:

Ethernet cable:

